

1. Introduction

Basic Theory

The **Bernoulli trials process**, named after **James Bernoulli**, is one of the simplest yet most important random processes in probability. Essentially, the process is the mathematical abstraction of coin tossing, but because of its wide applicability, it is usually stated in terms of a sequence of generic trials that satisfy the following assumptions:

1. Each trial has two possible outcomes, in the language of reliability called **success** and **failure**.
2. The trials are independent. Intuitively, the outcome of one trial has no influence over the outcome of another trial.
3. On each trial, the probability of success is p and the probability of failure is $1 - p$.

Random Variables

Mathematically, we can describe the Bernoulli trials process with a sequence of indicator **random variables**:

$$\mathbf{X} = (X_1, X_2, \dots)$$

An indicator variable is a random variable that takes only the values 1 and 0, which in this setting denote success and failure, respectively. Indicator variable X_j simply records the outcome of trial j . Thus, the indicator variables are **independent** and have the same **probability density function**:

$$\mathbb{P}(X_i = 1) = p, \quad \mathbb{P}(X_i = 0) = 1 - p$$

The distribution defined by this probability density function is known as the **Bernoulli distribution**. In statistical terms, the Bernoulli trials process corresponds to **sampling** from the Bernoulli distribution. In particular, the first n trials (X_1, X_2, \dots, X_n) form a random sample of size n from the Bernoulli distribution. Note that the Bernoulli trials process is characterized by a single parameter p .

❖ 1. Use the basic assumptions to show that the joint probability density function of the first n trials is given by

$$\mathbb{P}(X_1 = x_1, X_2 = x_2, \dots, X_n = x_n) = p^k (1 - p)^{n-k}, \quad (x_1, x_1, \dots, x_n) \in \{0, 1\}^n \text{ where } k = \sum_{i=1}^n x_i$$

❖ 2. Suppose that $\mathbf{X} = (X_1, X_2, \dots)$ is a Bernoulli trials process with parameter p . Show that $\mathbf{1} - \mathbf{X} = (1 - X_1, 1 - X_2, \dots)$ is a Bernoulli trials sequence with parameter $1 - p$.

❖ 3. Suppose that $\mathbf{U} = (U_1, U_2, \dots)$ is a sequence of independent random variables, each with the **uniform distribution** on the interval $[0, 1]$. For $p \in [0, 1]$ and $i \in \mathbb{N}_+$, let $X_i(p) = \mathbf{1}(U_i \leq p)$, the indicator variable of the event $\{U_i \leq p\}$. Show that $\mathbf{X}(p) = (X_1(p), X_2(p), \dots)$ is a Bernoulli trials process with probability

p .

Note that in the previous exercise, the Bernoulli trials processes for all possible values of the parameter p are defined on a common probability space. This type of construction is sometimes referred to as **coupling**. This exercise also shows how to simulate a Bernoulli trials process with **random numbers**. All of the other random process studied in this chapter are functions of the Bernoulli trials sequence, and hence can be simulated as well.

Moments

For future reference, let us compute the **mean**, **variance**, and **probability generating function** of a generic indicator variable X with $\mathbb{P}(X = 1) = p$.

4. Show that $\mathbb{E}(X) = p$

5. Show that $\text{var}(X) = p(1 - p)$

6. Show that $\mathbb{E}(t^X) = (1 - p) + pt$, $t \in \mathbb{R}$.

7. Sketch the graph of the variance in **Exercise 5** as a function of p . Note in particular that the variance is largest when $p = \frac{1}{2}$ and smallest when $p = 0$ or $p = 1$.

Examples and Applications

As we noted earlier, the most obvious example of Bernoulli trials is coin tossing, where success means heads and failure means tails. The parameter p is the probability of heads (so in general, the coin is biased).

8. In the **basic coin experiment**, set $n = 20$ and $p = 0.1$. Run the experiment with and observe the outcomes. Repeat with $p \in \{0.3, 0.5, 0.7, 0.9\}$.

Generic Examples

In a sense, the most general example of Bernoulli trials occurs when an experiment is replicated. Specifically, suppose that we have a basic **random experiment** and an event of interest A . Suppose now that we create a compound experiment that consists of independent replications of the basic experiment. Define success on trial i to mean that event A occurred on the i^{th} run, and define failure on trial i to mean that event A did not occur on the i^{th} run. This clearly defines a Bernoulli trials process with parameter $p = \mathbb{P}(A)$.

Bernoulli trials are also formed when we sample from a dichotomous population. Specifically, suppose that we have a population of two types of objects, which we will refer to as type 0 and type 1. For example, the objects could be persons, classified as *male* or *female*, or the objects could be components, classified as *good* or *defective*. We select n objects *at random* from the population; by definition, this means that each object in the population at the time of the draw is equally likely to be chosen. If the sampling is **with replacement**, then each object drawn is replaced before the next draw. In this case, successive draws are independent, so the

types of the objects in the sample form a sequence of Bernoulli trials, in which the parameter p is the proportion of type 1 objects in the population. If the sampling is **without replacement**, then the successive draws are dependent, so the types of the objects in the sample do not form a sequence of Bernoulli trials. However, if the population size is large compared to the sample size, the dependence caused by not replacing the objects may be negligible, so that for all practical purposes, the types of the objects in the sample can be treated as a sequence of Bernoulli trials. Additional discussion of [sampling from a dichotomous population](#) is in the in the chapter [Finite Sampling Models](#).

9. Suppose that a student takes a multiple choice test. The test has 10 questions, each of which has 4 possible answers (only one correct). If the student blindly guesses the answer to each question, do the questions form a sequence of Bernoulli trials? If so, identify the trial outcomes and the parameter p .



10. Candidate A is running for office in a certain district. Twenty persons are selected at random from the population of registered voters and asked if they prefer candidate A . Do the responses form a sequence of Bernoulli trials? If so identify the trial outcomes and the meaning of the parameter p .



11. An American roulette wheel has 38 slots; 18 are red, 18 are black, and 2 are green. A gambler plays roulette 15 times, betting on red each time. Do the outcomes form a sequence of Bernoulli trials? If so, identify the trial outcomes and the parameter p .



[Roulette](#) is discussed in more detail in the chapter on [Games of Chance](#).

12. Two tennis players play a set of 6 games. Do the games form a sequence of Bernoulli trials? If so, identify the trial outcomes and the meaning of the parameter p .



Reliability

Recall that in the standard model of [structural reliability](#), a system is composed of n components that operate independently of each other. Let X_i denote the state of component i , where 1 means working and 0 means failure. If the components are all of the same type, then our basic assumption is that the **state vector**

$$\mathbf{X} = (X_1, X_2, \dots, X_n)$$

is a sequence of Bernoulli trials. The state of the system, (again where 1 means working and 0 means failed) depends only on the states of the components, and thus is a random variable

$$Y = s(X_1, X_2, \dots, X_n)$$

where $s : \{0, 1\}^n \rightarrow \{0, 1\}$ is the **structure function**. Generally, the probability that a device is working is the **reliability** of the device, so the parameter p of the Bernoulli trials sequence is the common reliability of the components. By independence, the **system reliability** r is a function of the component reliability:

$$r(p) = \mathbb{P}_p(Y = 1), \quad p \in [0, 1]$$

where we are emphasizing the dependence of the probability measure \mathbb{P} on the parameter p . Appropriately enough, this function is known as the **reliability function**. Our challenge is usually to find the reliability function, given the structure function.

13. Recall that a **series system** is working if and only if each component is working.

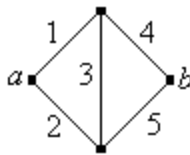
- Show that the state of the system is $Y = X_1 X_2 \cdots X_n = \min \{X_1, X_2, \dots, X_n\}$
- Show that the reliability function is $r(p) = p^n$ for $p \in [0, 1]$

14. Recall that a **parallel system** is working if and only if at least one component is working.

- Show that the state of the system is $Y = 1 - (1 - X_1)(1 - X_2) \cdots (1 - X_n) = \max \{X_1, X_2, \dots, X_n\}$
- Show that the reliability function is $r(p) = 1 - (1 - p)^n$ for $p \in [0, 1]$

Recall that in some cases, the system can be represented as a **graph** or **network**. The edges represent the components and the vertices the connections between the components. The system functions if and only if there is a working path between two designated vertices, which we will denote by a and b .

15. Find the reliability of the **Wheatstone bridge network** shown below (named for **Charles Wheatstone**).



The Pooled Blood Test

Suppose that each person in a population, independently of all others, has a certain disease with probability p . Thus, with respect to the disease, the persons in the population form a sequence of Bernoulli trials. The disease can be identified by a blood test, but of course the test has a cost.

For a group of $k > 1$ persons, we will compare two strategies. The first is to test the k persons individually, so that of course, k tests are required. The second strategy is to **pool** the blood samples of the k persons and test the pooled sample first. We assume that the test is negative if and only if all k persons are free of the disease; in this case just one test is required. On the other hand, the test is positive if and only if at least one person has the disease, in which case we then have to test the persons individually; in this case $k + 1$ tests are required. Thus, let Y denote the number of tests required for the pooled strategy.

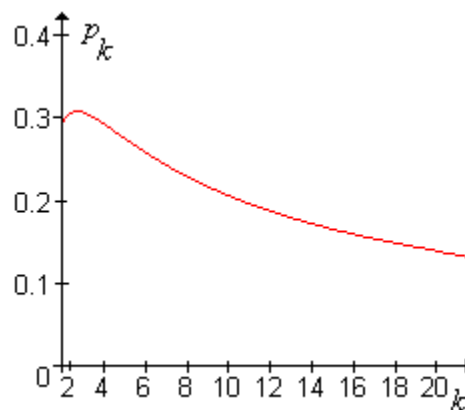
16. Show that

- $\mathbb{P}(Y = 1) = (1 - p)^k$, $\mathbb{P}(Y = k + 1) = 1 - (1 - p)^k$.
- $\mathbb{E}(Y) = 1 + k(1 - (1 - p)^k)$.
- $\text{var}(Y) = k^2(1 - p)^k(1 - (1 - p)^k)$.

17. Show that, in terms of expected value, the pooled strategy is better than the basic strategy if and only if

$$p < 1 - \left(\frac{1}{k}\right)^{\frac{1}{k}}$$

The graph of the critical value $p_k = 1 - \left(\frac{1}{k}\right)^{\frac{1}{k}}$ as a function of $k \in [2, 20]$ is shown in the graph below:



18. Show that

- The maximum value of p_k occurs at $k = 3$, and $p_3 \approx 0.307$.
- $p_k \rightarrow 0$ as $k \rightarrow \infty$.

From Exercise 18, it follows that if $p \geq 0.307$, pooling never makes sense, regardless of the size of the group k . At the other extreme, if p is very small, so that the disease is quite rare, pooling is better unless the group size k is very large.

Now suppose that we have n persons. If $k|n$ then we can partition the population into $\frac{n}{k}$ groups of k each, and apply the pooled strategy to each group. Note that $k = 1$ corresponds to individual testing, and $k = n$ corresponds to the pooled strategy on the entire population. Let Y_i denote the number of tests required for group i .

19. Argue that $(Y_1, Y_2, \dots, Y_{n/k})$ are independent and each has the distribution given in Exercise 16.

The total number of tests required for this partitioning scheme is

$$Z_{n,k} = Y_1 + Y_2 + \dots + Y_{n/k}$$

20. Show that the expected total number of tests is

$$\mathbb{E}(Z_{n,k}) = \begin{cases} n, & k = 1 \\ n \left(\left(1 + \frac{1}{k}\right) - (1-p)^k \right), & k > 1 \end{cases}$$

21. Show that the variance of the total number of tests is

$$\text{var}(Z_{n,k}) = \begin{cases} 0, & k = 1 \\ nk(1-p)^k (1 - (1-p)^k), & k > 1 \end{cases}$$

Thus, in terms of expected value, the optimal strategy is to group the population into $\frac{n}{k}$ groups of size k , where k minimizes the function defined in [Exercise 20](#). It is difficult to get a closed-form expression for the optimal value of k , but this value can be determined numerically for specific n and p .

22. For the following values of n and p , find the optimal pooling size k and the expected number of tests. (Restrict your attention to values of k that divide n .)

- $n = 100, p = 0.01$.
- $n = 1000, p = 0.05$.
- $n = 1000, p = 0.001$.



If k does not divide n , then we could divide the population of n persons into $\lfloor n/k \rfloor$ groups of k each and one “remainder” group with $n \bmod k$ members. This clearly complicates the analysis, but does not introduce any new ideas, so we will leave this extension to the interested reader.

[Virtual Laboratories](#) > [11. Bernoulli Trials](#) > [1](#) [2](#) [3](#) [4](#) [5](#) [6](#)

[Contents](#) | [Applets](#) | [Data Sets](#) | [Biographies](#) | [External Resources](#) | [Key words](#) | [Feedback](#) | ©